

Comparative Study



Alyssa Albanese

My comparative study focuses on analyzing two different artists with a total of three different works. I will be evaluating the cultural significance of the artists, as well as their time periods, the type of movement, and the formal qualities of each artwork. The artists I am focusing on are Shelby Keefe and Edvard Munch. The pieces I am focusing on are The Scream and Despair by Edvard Munch and A Beautiful Day in Talbot County by Shelby Keefe.

Evaluation of Cultural Significance of Monet

Shelby Keefe is a native Wisconsin artist that specializes in impressionist painting born in 1958. She is a full-time painter due to her success as a fine artist. She paints urban landscapes that are influenced by her surroundings. She uses landscapes to depict her emotions and to express herself. She is known for being a minimalist, in which she said “ I plan to develop my ability to say more with less”. A Beautiful Day in Talbot County is about, quite literally, a beautiful day in Talbot county. Her pieces are usually more about a beautiful days in a landscape, usually depicting buildings. A Beautiful Day in Talbot County is a piece using mainly light colors that depicts the feelings of contentedness as well as happiness, feelings usually evoked by a beautiful day in a town or city.



Analysis of Formal Qualities: Beautiful Day in Talbot County

Keefe use of texture is shown here quite aptly. She used rapid brushstrokes to give a soft, feathered feel. It made the painting feel almost out of focus and feather-looking.

Most of Keefe's work features a hazy tone, as if looking through a mist or fog. This is demonstrated through the rapid brushstrokes and the almost feather-look of the leaves on the tree



Monet frequently used dark colors around the focal point of a piece. The building is depicted in a hazy brown and purple, as well as the the background buildings. The shadowing is in purple.

This piece uses more straight lines. Due to her rapid brushstroke use, she made sure to make the lines harsh on the outlines. She mainly uses soft lines with hardly any definition. She lets the color contrast between which pieces are which.

Analysis of Formal Qualities: Continued

A Beautiful Day in Talbot County really uses all formal qualities beautifully. This is shown in the soft straight lines, the use of color as definition and contrast between parts, the bold blues and purples that were exclusively used for either shadowing or the sky, the steep browns that give the painting an afternoon glow. She uses the colors to set the tone and the setting. She also uses feather-like brushstrokes to add texture. Keefe uses these lines in order to create contrast in light/dark colors.



Evaluation of Cultural Significance of Edvard Munch

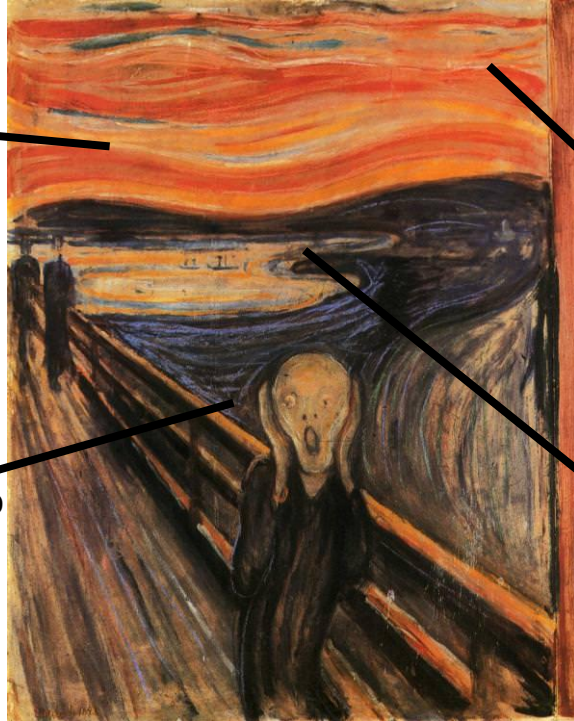
Edvard Munch was a Norwegian painter in the 1800's. He is known for *The Scream*, which depicts a disfigured man screaming. Munch is known to have used psychological themes in his work, making popular the dark tones in the art movement symbolism. He was known to explore the darkest emotions of the human form. He also made a lasting impact on the art movement German Expressionism. Munch was known to paint long, elongated figures that were shown in expressionist pieces, well demonstrated in Dali's work.



Analysis of Formal Qualities: The Scream

Edvard's use of texture is well demonstrated in the sky and the boardwalk. The piece looks soft and flow-like, very similar to a river.

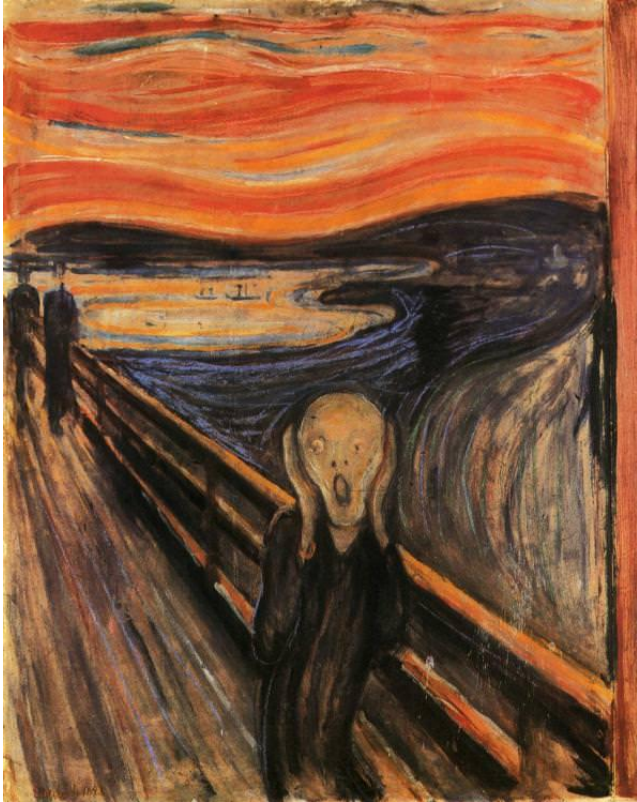
The use of color is very soft. He uses warm colors throughout to create a soft look. He uses stark, dark black to draw your attention to it the main focus point.



Munch used soft lines in his piece. The lines look hazy and blurred, not using many geometric lines. He uses more abstract lines.

Edvard uses dark colors on the man to create a sense of distress and sorrow. It almost appears as if the colors surrounding it are light to create a sense of surrounded by happiness, but being sad anyway.

Analysis of Formal Qualities Continued



The overall meaning is sadness and being lost. This is most aptly shown through the use of the dark colors and distorted shape of the man face and head. This is also shown through the soft, warm colors surrounding the man while the man himself is dark black. This makes the man appear sad or not happy. The colors surrounding the man are light, which support the theory that he is sad and alone in a world that is happy. Orange and yellows are light colors, which can be used to convey happiness. The Screaming man is dark and alone, surrounded in a colorful, happy world. The man is curved, much like the sky and the beach scene in the background. This can allude to the man seemingly being lonely, but he's actually in harmony with a world that seems happy, but is distorted as well. Basically, the man is sad, but he isn't actually alone.

Analysis of Formal Qualities: Despair

Munch uses strong, wispy brush strokes in the sky to give a soft, evening or early morning, feeling.

Munch uses dark tones to give off a sad or despairing tone. He wanted to audience to feel what the main man in the center feels.

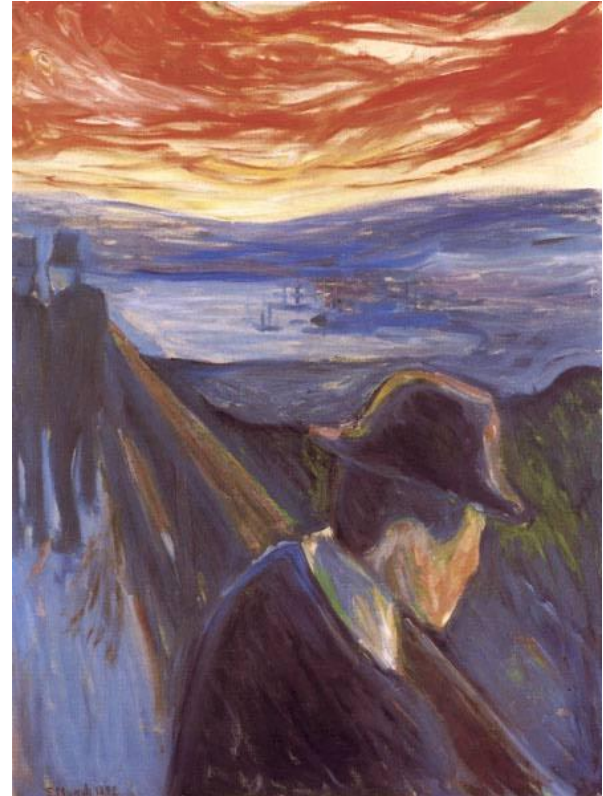


Munch uses the man in the foreground to give him more purpose and to make him seem more important. He uses the two young men in the background to suggest a feeling of isolation.

Munch, similar to The Scream , uses soft, hazy lines. This adds a softness to the sky, but adds a sense of unimportance to the character in the foreground.

Analysis of Formal Qualities: Despair continued

Munch's *Despair* is about about a man, foreground, who may be experiencing isolation. This is suggested by the two men in the back together, while the man being by himself. This can suggest that the man feels alone in a situation. The man is also looking down with a blank face. This could suggest he is toiling over something (looking down). The fact the man's face is blank could be Munch's way of having the man be anonymous, which could allow the viewer to put themselves in his position. This would allow the person to realize they may be alone, but it allows them to really contemplate something.



Interpretation of Function and Purpose: A Beautiful Day in Talbot County

The building is in bright color, suggesting importance.

The building is in the foreground and is in bright colors, yet again suggesting importance due to the contrast that occurs.

The people are also in the foreground which also suggest their importance. But, the building is much larger, which makes a viewer believe the building is most important.



The emotions set forth are a warm buzz feeling from a warm summer's day. Also, the feelings of familial comfort and happiness are brought about.

This piece is of a beautiful day in Talbot County, which suggests the importance of small towns and the wonderfulness of a day out and about.

The colors, such as the vibrant green of the trees, give off a warm feeling, that gives off the sensation of growth.

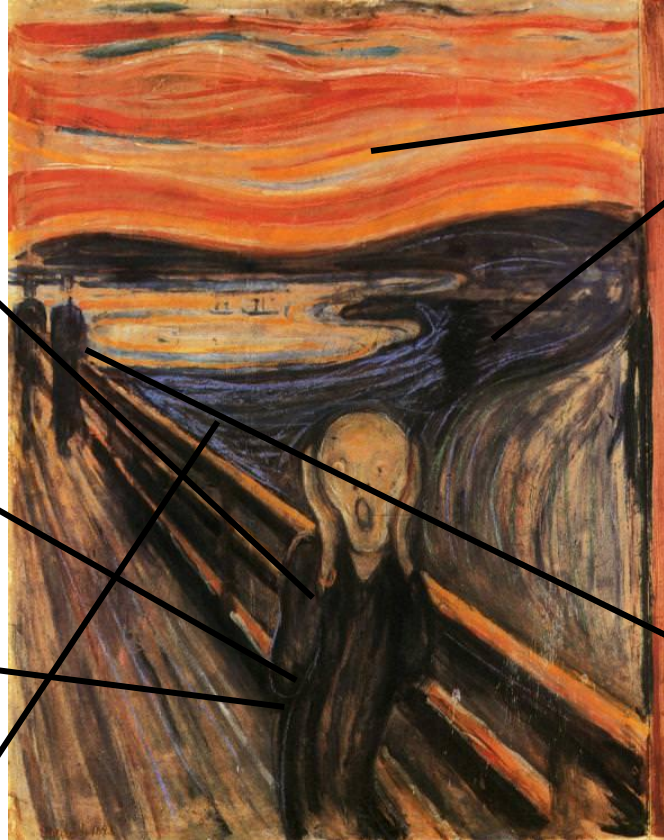
Interpretation of Function and Purpose: The Scream

This painting is depicting a man screaming on a boardwalk, a famous Munch setting.

This piece demonstrates man in a panic state.

This emotion of panic and unease is brought out in the audience.

The audience can also get a dark, dreary tone from the dark colors



The contrasting colors in the foreground and background suggest that there is a way to get out of this panic, to a brighter place.

The balance between the contrasting colors is excellent.

The two characters in the background give a sense of everyone being around you, but no one noticing the panic.

Interpretation of Function and Purpose: Despair

This painting is about about a man, in the foreground, experiencing despair.

This feeling may be because of isolation, as shown by the two men in the back together and the man alone.

The man's face is pointing east, which could elude to something being beyond view. Something that could be causing his despair.



The man is facing down, which alludes to him thinking about something or contemplating something.

The man also has a blank face which allows the man the ability of anonymity. This gives the viewer the ability to place themselves in his shoes.

Comparing/ Contrasting Artistic Styles

- Uses color to add tone to piece
- Uses mainly buildings and color to suggest meaning
- The colors used are mainly light, which add to the meaning of the piece

Keffe

- Uses mainly dark tones
- Focuses on dark meanings such as panic, isolation and despair
- Uses dark colors to suggest new tones to the piece.

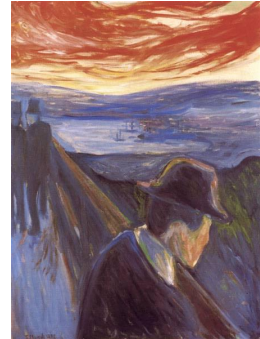
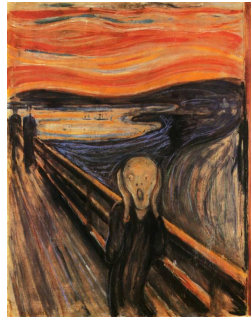
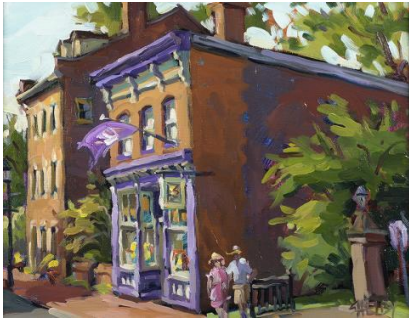
Munch

Comparing/Contrasting Art Pieces

- Color to suggest themes
- Light/dark color balance
- Main focus in foreground
- Contains one main focus with background focus

- Color to suggest dark themes
- Light/dark color balance
- Main focus in the foreground
- Two background figures that add to the meaning
- Light color coloring back

- Color to suggest dark themes
- Light / dark color balance
- Main focus in foreground
- Contains two background background focus to add the theme
- Light in background



Comparing / Contrasting Emotion

- In A Beautiful Day in Talbot County , the emotion is light and happy
- Warm emotions given due to the color choice

Keefe

- In both pieces, the emotion is dreary and dark
- Dark emotions due to color choice as well as facial expression

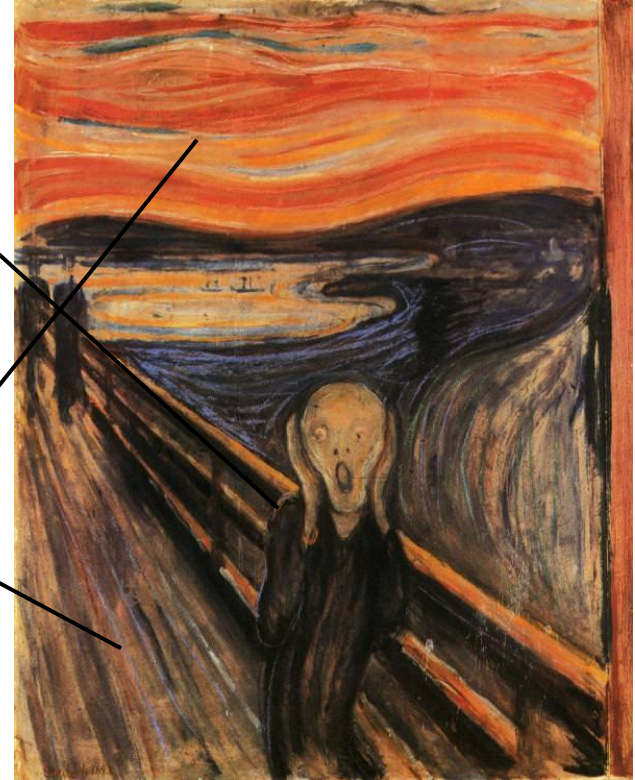
Munch

Impact of Munch's The Scream on artworks

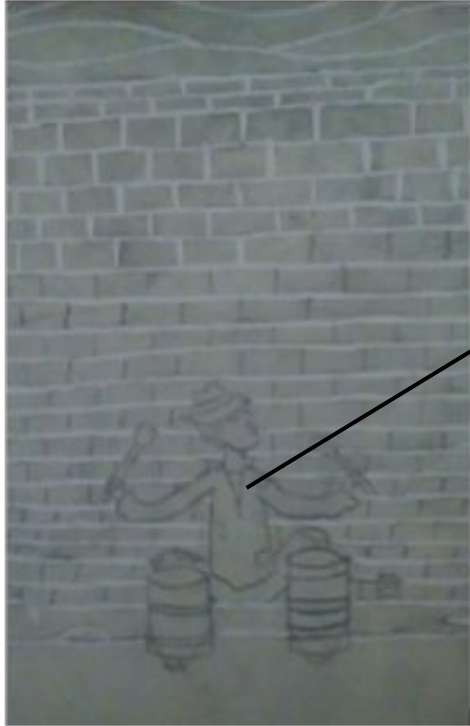


Munch's use of dark colors was used frequently throughout my piece, being as it is completely black and white. I liked the effect black had on the overall meaning of my piece. It made my piece more dark and added a lonely, melancholic feel.

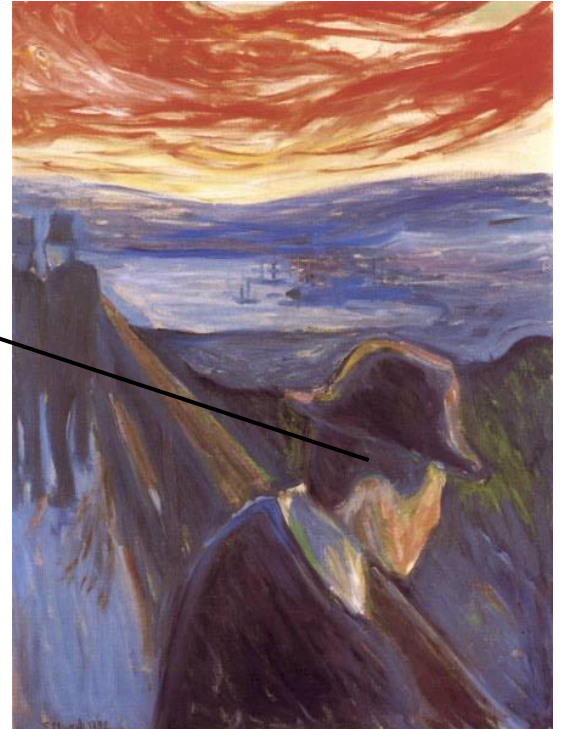
This piece also contained the wavy lines as well as harsh straight lines, much like Munch. I used the waves lines in the background to add a hazy feel. I used harsh lines as a backdrop to add contrast to the man.



Impact of Munch's Despair on artworks

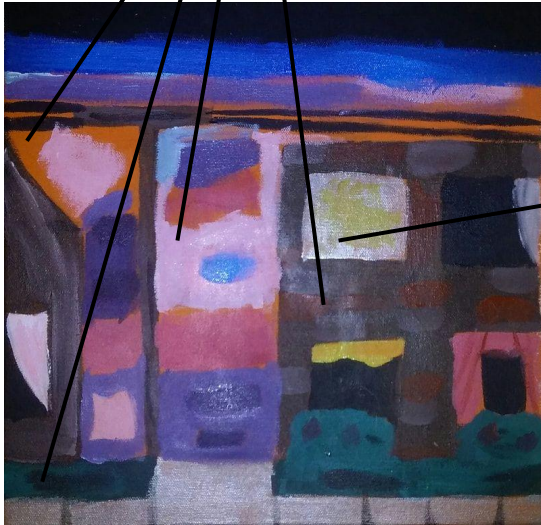


For this piece, I was also inspired by Despair by Edvard Munch. This was largely seen in relation to the man and his body. Both men are alone in solitude, both have their heads facing the east, both have hats on their heads, and both are not facing straight. I took large inspiration from the man in Despair because I wanted my man to be alone and seemingly facing something behind the scenes so to speak. I wanted the viewers to wonder what the man in my piece was looking at, at much like Despair.



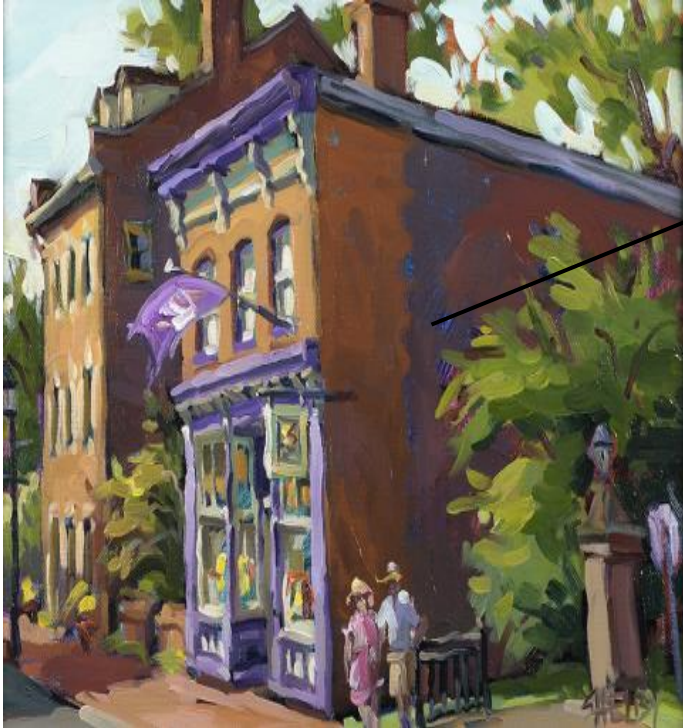
Impact of Keefe's A Beautiful Day In Talbot County

Green- light, feathery brushstrokes
Pink -light, soft brushstrokes
Orange- muddy color, vibrant, harsh
brushstrokes
Purple- dark, soft brushstrokes
Light brown- light, harsh brushstrokes



I was influenced greatly by Keefe's A Beautiful Day In Talbot County in my piece. One inspiration was the color. Keefe uses many vibrant colors, such as yellow, light brown, green, purple, and pink. I knew that Keefe used these bright colors on purpose. One reason is that she used these bright colors, such as yellow, pink, and green, in order to portray happiness and the 'beautiful day' as depicted in the title. I wanted to portray this same idea. I wanted to depict my home as happy and beautiful.

Impact continued...



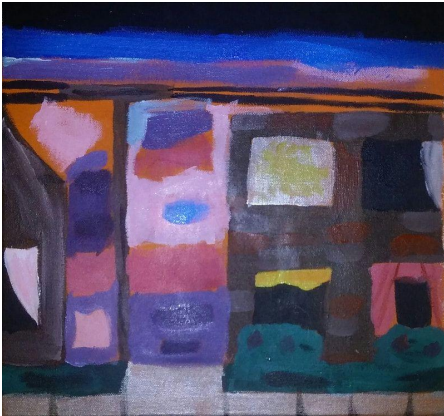
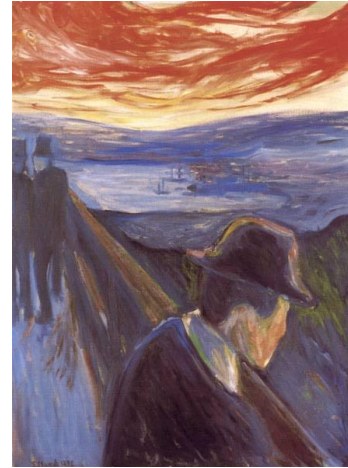
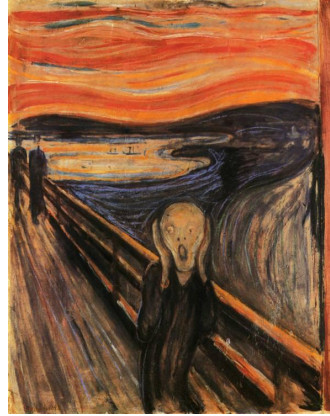
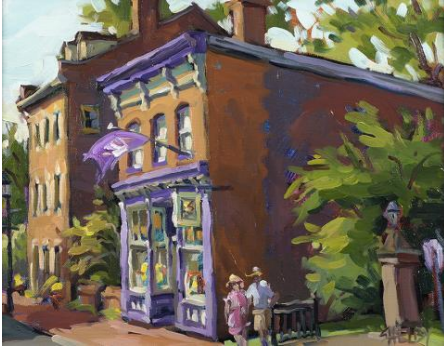
I used similar structure. Two buildings were used in mine. I used brighter colors in one building which put more emphasis on this building.



Another major influence was the overall structure of the piece.

In *A Beautiful Day in Talbot County*, Keefe has two buildings pictured. One building is in the foreground, which is more predominant in the picture. This building has more colors as well. This was done to make sure this building is noticed first. The use of color was to emphasize importance on this building.

Overall Impact on Message and Aesthetic



These pieces had a great affect on in my work. Not only did their structure, but color, line, and the use of these elements of art to add emphasis to a object all had an impact on overall meaning and aesthetic.